



Calibration, Testing & Technical Consultancy Providing Company

#### ABSOLUTE INSTRUMENTS CALIBRATION SERVICES LLP (AICS)

Plot no. 60, Survey no. 259/2, Shed no. 1, Vardhman industrial area,  
Umiyaji estate, Kothariya solvent, Rajkot - 360 022, Gujarat

+91 96878 58468 | +91 81281 85165 | info@aicsrajkot.com | www.aicsrajkot.com

#### Our Service Available at :

**Gujarat :** Rajkot, Ahmedabad, Baroda, Gandhinagar, Dholera, Jamnagar,  
Morbi, Bhavnagar, Junagadh, Veraval, Porbandar, Kutch,  
Halol, Ankleshwar, Surat, Vapi, Bharuch, Amreli,  
Dwarka, Botad

**Rajasthan :** Jaipur, Jodhpur, Udaipur, Alwar, Bhiwadi

**Maharashtra :** Pune, Nashik, Aurangabad, Mumbai,  
Kolhapur, Nagpur

**Madhya Pradesh :** Indor, Jabalpur, Bhopal, Satna

**Jharkhand :** Jamshedpur, Tata Nagar

# Absolute

Where Quality & Service Come Together

NABL Accredited Laboratory



## 01 | CALIBRATION





Founded In 2015,

### Why Absolute lab for calibration ?

- ▶ Company has rich experience of calibration in government organization multinational companies. So far more than 700 companies have used our facilities for calibration of more than 1,77,000 instruments.
- ▶ We are client-centric organization and thus our primary aim is to garner 100% customer satisfaction. Our high-quality solutions have helped us to reform our business operations while delivering measurable results to our clients. A total customer-oriented business approach is at the core of our organizational planning.

### Why Absolute lab is the best ?

Well-equipped with holistic infrastructure that caters to the ever changing needs.

Company also has collaborations with many private and government laboratories so we can assist our client for the calibration .



As per standard we accomplished dust free, vibration proof, properly illuminated **temperature and humidity** controlled environment in our laboratory.



Operational facilities with **fully digital, Latest, Standard** Make equipment which is required need for industries.



Expertise in every type of equipment and On-Site calibration, **experienced staff.**



Error-free reports within the **scheduled timeline.**



**NABL** Accredited Laboratory as per ISO / IEC 17025: 2017. Our results are strait away accepted by any Third party & assessment bodies worldwide as we are known for our **technical competence.**

CALIBRATION  
EXPERTS  
WITH **RICH**  
**EXPERIENCE &**  
**INNOVATION**

Absolute

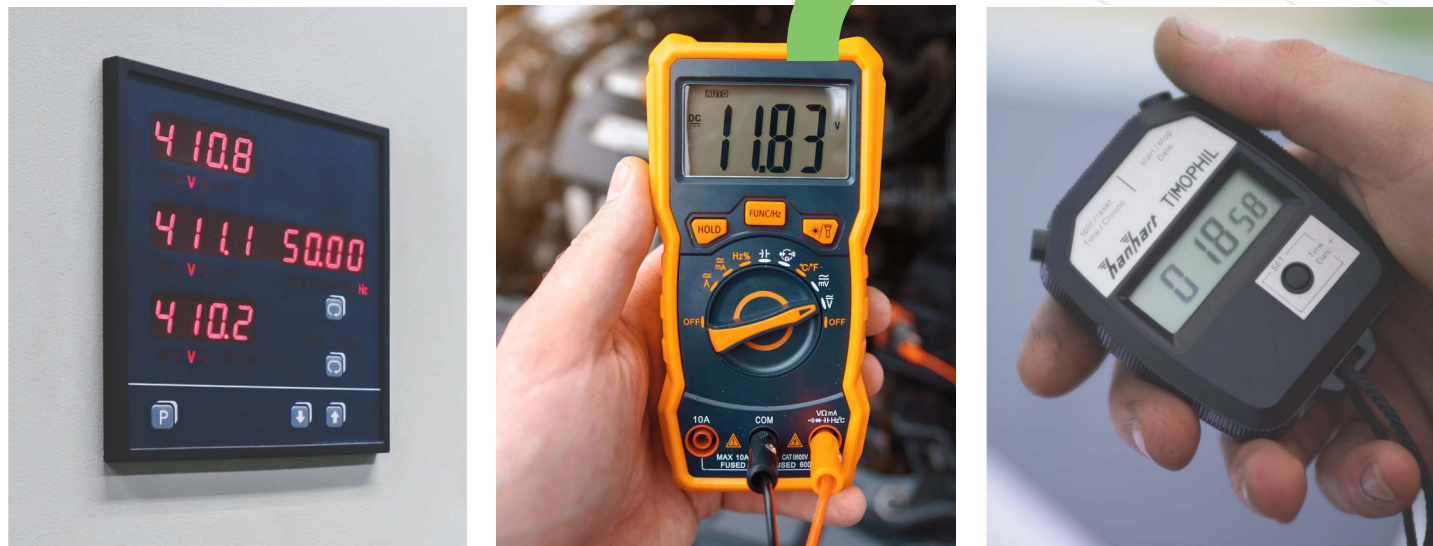


## 01 | Thermal Calibration :



- ▶ All type of Furnace Calibration / Mapping / Validation / Thermal Uniformity Survey (Single or Multi Point) As per Every Standard.
- ▶ Autoclave, Oven, Deep Freezer, IQF Calibration / Validation.
- ▶ Temperature & Relative Humidity (RH), Thermometer, Thermocouple, Muffle Furnace, Oven, Hygrometer, Humidity sensor, RTD sensor.
- ▶ IR Pyrometer, IR Gun, Temp Stick Dip pyrometer.
- ▶ System Accuracy Test as per Standard(SAT).

## 02 | Electro – Technical Calibration :



- ▶ Digital Temperature Controller / Indicators / Data Loggers / Scanners / Recorders, Temperature Calibrator.
- ▶ AC / DC Current, AC / DC Voltage, Resistance, Capacitance, Frequency, Power, Transmitter, Energy meter, Power factor Meter.
- ▶ Timer / Stop watch Ph meter, TDS meter, Conductivity meter Calibration.

## 03 | Mechanical Dimensions, Weight, Pressure :



- ▶ All type of dimension instruments like Vernier Callipers, Micrometer, 2D High Gauge Depth Gauges.
- ▶ Dial gauge, pistol callipers, Plain plug & Ring gauge, Thread plug & Ring gauge, Ultrasonic / Coating thickness gauge, Snap gauge.
- ▶ LVDT Probe, Weld Gauge, Feeler Gauge, Radius Gauge.
- ▶ Measuring Scale/Tap, Test Sieve, Surface Plate, Surface Roughness tester.
- ▶ All type of Pressure & Vacuum Gauge, Pressure transmitter, Pressure Switch, safety Valve, Manometer.
- ▶ All type of Mechanical Weighing Balance and Weights.

## 04 | Mechanical force :



- ▶ Universal Testing Machine (UTM), Compression Testing Machine (CTM).
- ▶ Hardness Tester.
- ▶ Impact Testing Machine.
- ▶ All type of Civil Lab Force equipment.
- ▶ Extensometer.
- ▶ Dynamometer (Pole Testing Machine).



## 05 | Hydro test & Fitness test of materials handling crene



## 06 | Special Instruments:

- ▶ Optical – Lux Meter, Light Meter, Gauss Meter, UV Meter.
- ▶ Acceleration & Speed – Tachometer, RPM Meter, Centrifuge Machine.
- ▶ Acoustics – Sound Meter.
- ▶ Magnification – Profile Projector, Microscope.
- ▶ Precision Instruments – Comparator Stand, Flatness of Base, Dial Calibration Tester, Wire Gauge, Bevel / Angle Protractor, Slip Gauge Set.
- ▶ Density & Viscosity – Hydrometer, Viscosity Cup, Ford Cup (B4 Cup)
- ▶ Torque – Torque Wrench.
- ▶ Mass & volume – Burette, Micro pipette, Flasks, Measuring Cylinder, Beaker.
- ▶ Other – Co2 Meter, O2 Probe Meter, Air Flow Meter, Rotameter, Rebound Hammer, UPV Tester.

## 07 | RMC Batching Plant Calibration

## 08 | Sales, Service & Repairing :

- ▶ Data Logger, Temperature Indicators / Controller.
- ▶ UTM, CTM, Impact Testing Machine, Hardness tester or Accessories (Test block, Diamond / Ball Point, Extensometer).
- ▶ Pyrometer, IR Gun.
- ▶ All type of Dimensional Instruments of All Make.
- ▶ All type of Laboratory uses Glass and plastic wares.
- ▶ All type of Laboratory Chemicals.



## Our Valued Customers







Calibration, Testing & Technical Consultancy Providing Company

#### ABSOLUTE MAT TEST LLP

Plot no. 60, Survey no. 259/2, Shed no. 1, Vardhman industrial area,  
Umiyaji estate, Kothariya solvent, Rajkot - 360 022, Gujarat

+91 94080 45862 | +91 81281 85165 | +91 96878 58468

absolutematttest@gmail.com www.aicsrajkot.com

#### Our Service Available at :

Gujarat : Rajkot, Ahmedabad, Baroda, Gandhinagar, Dholera, Jamnagar,  
Morbi, Bhavnagar, Junagadh, Veraval, Porbandar, Kutch,  
Halol, Ankleshwar, Surat, Vapi, Bharuch, Amreli,  
Dwarka, Botad

Rajasthan : Jaipur, Jodhpur, Udaipur, Alwar, Bhiwadi

Maharashtra : Pune, Nashik, Aurangabad, Mumbai,  
Kolhapur, Nagpur

Madhya Pradesh : Indor, Jabalpur, Bhopal, Satna

Jharkhand : Jamshedpur, Tata Nagar

# Absolute

Where Quality & Service Come Together

NABL Accredited Laboratory

02 | TESTING





Founded in 2023, Absolute Mat Test LLP aims at using a visionary approach while imparting a wide array of services for Building material testing, Soil / Geotechnical Investigation, Transportation (Bitumen / Asphalt), Soil Field Testing, Mechanical Testing (Physical & Chemical), Non-destructive Testing (NDT), and any other Product Testing for the Strength, Quality, Purity of materials.

## Why absolute lab for materials and product testing?

Well-equipped with holistic infrastructure that caters to the ever changing needs.

Company also has collaborations with many private and government laboratories so we can assist our client for the calibration.



As per standard we accomplished dust free, vibration proof, properly illuminated **temperature and humidity** controlled environment in our laboratory.



Operational facilities with **fully digital, Latest, Standard** Make equipment which is required need for industries.



Expertise in every type of equipment and On-Site calibration, **experienced staff**.



Error-free reports within the **scheduled timeline**.



**NABL Accredited Laboratory** as per ISO / IEC 17025: 2017. Our results are strait away accepted by any Third party & assessment bodies worldwide as we are known for our **technical competence**.

## Why absolute lab is the best?

- ▶ We are client-centric organization and thus our primary aim is to garner 100% customer satisfaction. Our high-quality solutions have helped us to reform our business operations while delivering measurable results to our clients. A total customer-oriented business approach is at the core of our organizational planning.
- ▶ We are Committed to quality, innovation and respect to the nation.

WE DELIVER  
**RESULTS**  
YOU CAN  
**RELY ON**

**Absolute**



01 | Aggregate (Coarse & Fine) :



- Abrasion Value
- Bulk Density
- Elongation Index
- Flakiness Index
- Crushing Value
- Striping Value
- Impact Value
- Silt Content
- Sieve Analysis
- Alkali Aggregate Reactivity
- Soundness
- Specific Gravity
- Bulking Of Sand
- 10% Fine Value
- Material Finer than 75  $\mu$
- Water Absorption
- Organic / Inorganic Content
- Chemical Tests

02 | Bitumen :

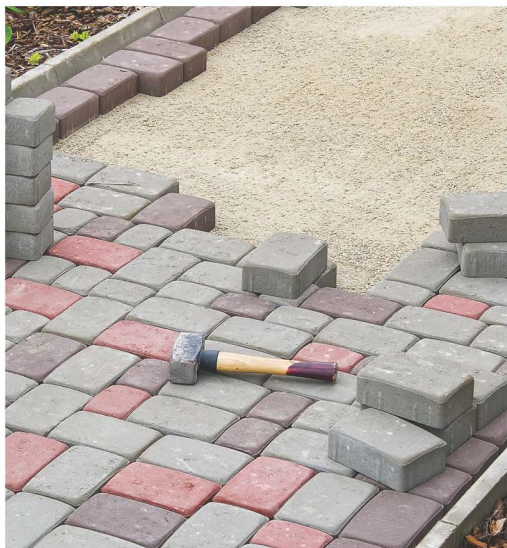
- Absolute Viscosity
- Kinematic Viscosity
- Ductility Test
- Flash & Fire Point
- Penetration Test
- Softening Point Test
- Loss on Heating
- Specific Gravity
- Water Content Test

Bitumen Mix

- Binder Content
- Density
- Marshal Flow
- Marshal Stability



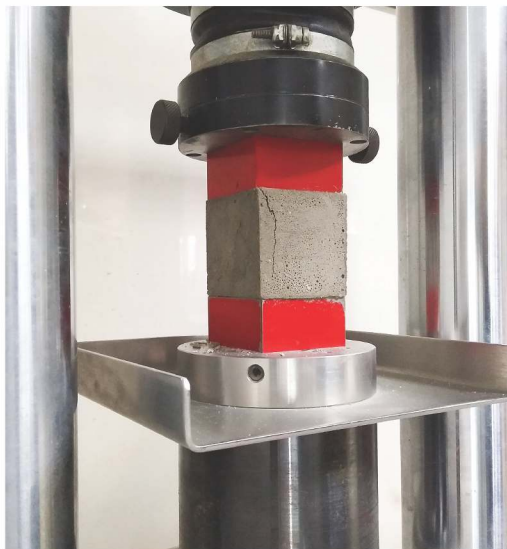
03 | Hollow / solid / paver blocks (AAC, CC, CLC etc.), kerb stone & bricks :



- Compressive Strength
- Dimensions
- Water Absorption
- Density
- Moisture movement
- Drying Shrinkage
- Abrasion Resistance
- Splitting Tensile Strength
- Efflorescence (Bricks)

04 | Concrete (Fresh & hardened) :

- Slump test
- Flow
- Setting Time
- Bleeding
- Compressive Strength (Cube / Core / Cylinder) (Normal / Accelerated Curing)
- Water Absorption
- Flexural Strength
- Split Tensile Test
- Moisture Movement
- Water Penetration / Permeability of Concrete



05 | Admixture :



- Slump test
- Compressive Strength
- pH
- Ash content
- Density

Mix Design

- Mix Design of Concrete
- Mix Design of Pavement Quality Concrete
- Mix Design For GSB, WMM
- Bituminous Concrete Mix Design (BC, SDBC, DBM)

06 | Cement / Fly ash :

- Compressive Strength
- Fineness by dry sieving
- Fineness by Blain Air Permeability
- Standard Consistency
- Soundness
- Initial & Final Setting time
- Density, Specific Gravity
- Chemical test





07 | Tiles (Cement concrete tiles, ceramic vitrified tiles, glazed or un-glazed tiles) :



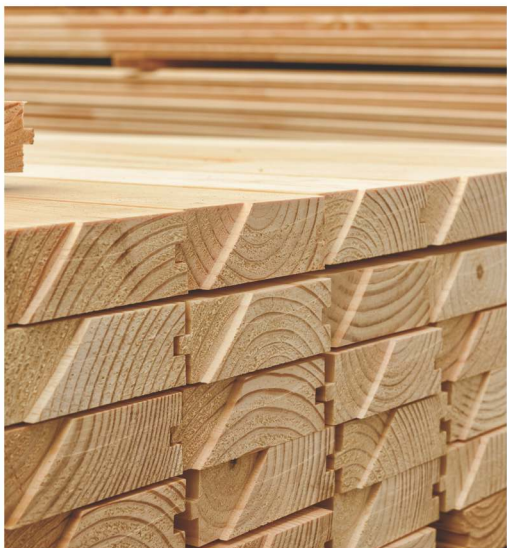
- ▶ Dimensions
- ▶ Water Absorption
- ▶ Modules of Rupture (MOR)
- ▶ Chemical Resistance
- ▶ Scratch Hardness
- ▶ Straightness of Sides / Surface Flatness

08 | Steel (TMT bard, rebar coupler, strain wire, fasteners) :

- ▶ Tensile Test
- ▶ Mass per Meter
- ▶ Yield Stress
- ▶ Bend Test
- ▶ Re-Bend Test
- ▶ Elongation
- ▶ Cross section area and Diameter
- ▶ Chemical Analysis



09 | Timber / Wood / Plywood :



- ▶ Moisture Content
- ▶ Density
- ▶ Tensile Strength Test
- ▶ Specific Gravity
- ▶ Flexural Test
- ▶ Bending Test
- ▶ Compressive Strength

10 | Rock & natural stone :

- ▶ Density
- ▶ Moisture or water content
- ▶ Scratch Hardness
- ▶ Porosity
- ▶ Compressive Strength
- ▶ Specific Gravity
- ▶ Unconfined Compressive strength
- ▶ Visual Inspection (Texture & Cracks)



11 | Soil laboratory test :



- |   |                                    |
|---|------------------------------------|
| ▶ California Bearing Ratio (CBR) Test in laboratory | ▶ Shrinkage Limit                  |
| ▶ Direct Shear Test (Angle & Cohesion)              | ▶ Liquid Limit                     |
| ▶ Free Swell Index                                  | ▶ Plastic Limit & Plasticity Index |
| ▶ Standard / Modified Procter Test (MDD/OMC)        | ▶ Consolidation                    |
| ▶ Specific Gravity                                  | ▶ Swelling Pressure Test           |
| ▶ Gradation by Sieve Analysis                       | ▶ Triaxial Test                    |
| ▶ Moisture or water content                         | ▶ Permeability Test                |
| ▶ Unconfined Compressive strength                   | ▶ Chemical Test                    |

12 | Soil field test :

- ▶ Density by Sand Replacement
- ▶ Density by Core Cutter
- ▶ Field Moisture Content
- ▶ Standard Penetration Test (SPT)
- ▶ Dynamic Cone Penetration Test (DCPT)
- ▶ Field California Bearing Ratio (CBR)
- ▶ Soil Bearing Capacity (SBC)
- ▶ Electrical Resistivity Test (ERT)
- ▶ Thermal Resistivity Test (TRT)

Field test

- ▶ Plate Load Test
- ▶ Pull out Load Test
- ▶ Bridge Load Test
- ▶ Span Load Test
- ▶ Benkelman Beam
- ▶ Deflection Test
- ▶ Modulus of subgrade Reaction ( K Value )

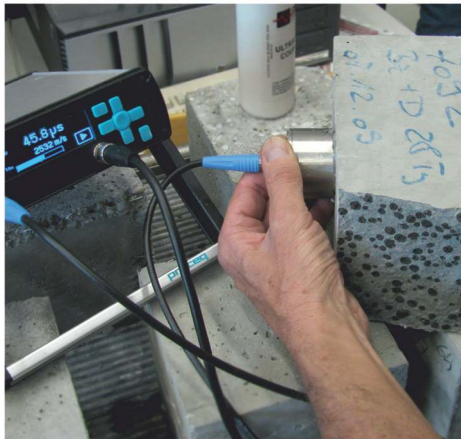
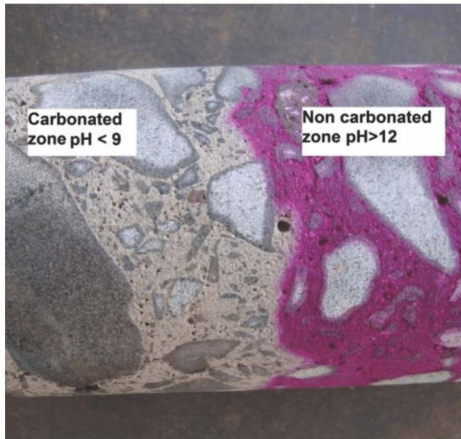




Non-Destructive Testing (NDT)

Non-Destructive Testing (NDT) is a way of Testing without destroying the construction. This Means the Component Can continues to be used and the non-Destructive Testing Method can be done without any harming to the construction. Mainly due to lack of proper Quality Control at site & Supervision during the Course of Construction. Sometimes Manner of Preparation is not good and material quality may be poor.

Type of Non-Destructive Test (NDT) Test :



- ▶ Rebound Hammer Test
- ▶ Ultrasonic Pulse Velocity Test (UPV)
- ▶ Half Cell Potential
- ▶ Concrete Core Drilling
- ▶ High Strain Pile Dynamic Test
- ▶ Cross Hole Sonic Test
- ▶ Cover meter test
- ▶ High strain dynamic pile test
- ▶ Structural fitness Survey
- ▶ Carbonation Test
- ▶ Crack Depth measurement
- ▶ Pile Integrity Test

Special materials testing

- ▶ Drinking & Construction Water
- ▶ Retro Reflection Test of Thermoplast Materials
- ▶ Retro Reflection Test of Sign Board
- ▶ Thermoplast Materials
- ▶ Aluminium Section
- ▶ PVC Pipe
- ▶ Ducting Pipe
- ▶ RCC Pipe
- ▶ Manhole Cover
- ▶ Foundation Bolt
- ▶ Gypsum
- ▶ Plaster of Paris
- ▶ Curing compound
- ▶ Precast Concrete Hume Pipes
- ▶ Polyethylene Films and Sheets
- ▶ Sealants
- ▶ Chemical and mechanical test of Metal and metal products

Sales, service & calibration

- ▶ Universal Testing Machine (UTM), Compressive Testing Machine (CTM) all Make.
- ▶ Automatic Level, GPS, Distance meter.
- ▶ Electronic Weighing Scale & Analytical Scale.
- ▶ Any type of Testing Apparatus.
- ▶ Any type of NDT Equipment.
- ▶ Any type of Measuring Equipment.

Our Valued Customers





Calibration, Testing & Technical Consultancy Providing Company

Our Group of Company :

- **Absolute Instruments Calibration Services LLP (AICS)**
- **Absolute Mat Test LLP**

📍 Plot no. 60, Survey no. 259/2, Shed no.1, Vardhman industrial area,  
Umiyaji estate, Kothariya solvent, Rajkot - 360 022, Gujarat

☎ +91 96878 58468 | +91 81281 85165 | +91 94080 45862

✉ info@aicsrajkot.com | absolutemattest@gmail.com 🌐 www.aicsrajkot.com

#### Our Service Available at :

**Gujarat :** Rajkot, Ahmedabad, Baroda, Gandhinagar, Dholera, Jamnagar,  
Morbi, Bhavnagar, Junagadh, Veraval, Porbandar, Kutch,  
Halol, Ankleshwar, Surat, Vapi, Bharuch, Amreli,  
Dwarka, Botad

**Rajasthan :** Jaipur, Jodhpur, Udaipur, Alwar, Bhiwadi

**Maharashtra :** Pune, Nashik, Aurangabad, Mumbai,  
Kolhapur, Nagpur

**Madhya Pradesh :** Indor, Jabalpur, Bhopal, Satna

**Jharkhand :** Jamshedpur, Tata Nagar

# Absolute

Where Quality & Service Come Together

## NABL Accredited Laboratory



## CALIBRATION & TESTING





## 01 Calibration :

- Thermal (Temperature & Relative Humidity (RH)) & Thermal Mapping
- ET (AC/DC Current, Timer, Temperature Simulation)
- Mechanical Dimension, Precision Instruments
- Mechanical Pressure
- Mechanical Force (UTM, Impact Testing Machine, Hardness Tester), Torque
- Mechanical Mass & Volume
- Mechanical Weights
- Acoustics, Acceleration & Speed
- Mechanical Density & Viscosity
- Magnification & Optical
- Hydro test & Fitness test for material handling equipment.
- Any type of Industrial, laboratory, medical, research, Construction Equipment Calibration



## 02 Testing :

- **Building Materials :** Admixture - Concrete (Fresh & Hardened) - Coarse & Fine aggregates - Bricks - Hollow and Solid Concrete Blocks - Lightweight solid Concrete Block - AAC Blocks - Paver Blocks- Cement & Fly Ash - Tiles - Natural Stone.
- **Transportation :** VG Grade Bitumen - Industrial Grade Bitumen - Asphalt Testing - Bitumen Mix Design.
- **Soil and Geotech :** Soil testing - Geo technical investigation - SBC, Rock, Natural Stone.
- **Mechanical :** Steel Testing, High Strand Tensile Bars - Steel Tubes, Channel / Section (Structural Steel) - MS Plate, Coupler, Stainless Steel.
- **Mix Design :** Concrete mix Design and Bitumen Mix design.
- Soil Field Test
- Non - Destructive Testing (NDT)
- Construction Water & Drinking Water
- Chemical Testing & Mechanical Testing
- Product Testing for Government & Tendering
- Any other type of Materials Testing Facilities